



# COMPANY PROFILE

# 2026

Endumeni Enterprises is built on a clear purpose — to deliver dependable, high-quality engineering solutions that strengthen the industries we serve.

[sales@endumeni.com](mailto:sales@endumeni.com)  
[admin@endumeni.com](mailto:admin@endumeni.com)





# CONTACT DETAILS

## ***Company Information***

- UMUSA ITHEMBA (PTY) LTD T/A ENDUMENI ENTERPRISES
- Company Reg. No.: 2016/121591/07
- VAT No.: 434 027 6007
- Public Liability Policy Cover: R2,500,000.00 [Outsurance]
- B-BBEE Status: Level Two [51.0 % black owned]
- Banking Details: Bank: **First National Bank Bank**  
Account No.: 63048347735  
Branch Code: 270150

## ***Contact Information :***

- 013 170 8060 | 079 406 0829 | 013 170 8058
- [www.endumeni.com](http://www.endumeni.com)
- [sales@endumeni.com](mailto:sales@endumeni.com) | [admin@endumeni.com](mailto:admin@endumeni.com)
- Plot 147 Elandsdrif Mooinooi 0325

## ***Ownership***

- FREDDY MBUYANE (MANAGING DIRECTOR) 082 902 3746
- Thys Annandale (Director) 083 253 3123

## Core Values

Management and staff at Endumeni Enterprises subscribe and commit themselves to the following values:

- To respect the rights of all clients, tenants, and employees
- To never breach the confidentiality of clients
- To respect client's expectation of a professional service
- To operate in a non-discriminatory and non-partisan manner
- To strive to always provide an excellent service to clients and tenants
- To promote transparency and avoid favouritism, corruption, and conflict of interest
- To operate in a manner which will reflect our integrity and honesty

## Quality Statement

Endumeni Enterprises is committed to consistently provide quality services and products that meet and exceed customer and regulatory requirements through continuous improvement of the effectiveness of the Quality Management System. Our objective is to attain an ISO 9001:2015 certification before the end of 2028.

## Current Ownership

Endumeni Enterprises is a private company with 2 shareholders, **Mr. Freddy Mbuyane** – Managing Director, **Mr. Thys Annandale** – Director.

The Current shareholding of the company is as follows:

Division	Shareholder	Race	HDI % of Shareholder	HDI % of Division
Endumeni Enterprises	Freddy Mbuyane	Black	51.00%	51.00%
Endumeni Enterprises	Thys Annandale	White	49%	49%

## Skills Development

We actively encourage growth and development in all our staff and view skills development and capacity building as a critical component of our business. We actively drive on the job training and mentorship programs.

## Skills Development Employment Equity Policy

Endumeni Enterprises is committed to creating and maintaining an environment which provides equal opportunities to all employees, with special consideration for historically disadvantaged groups. Recruitment and selection are based on skills, expertise, medical fitness and objectivity, having regard for job competency.

## Social Responsibility

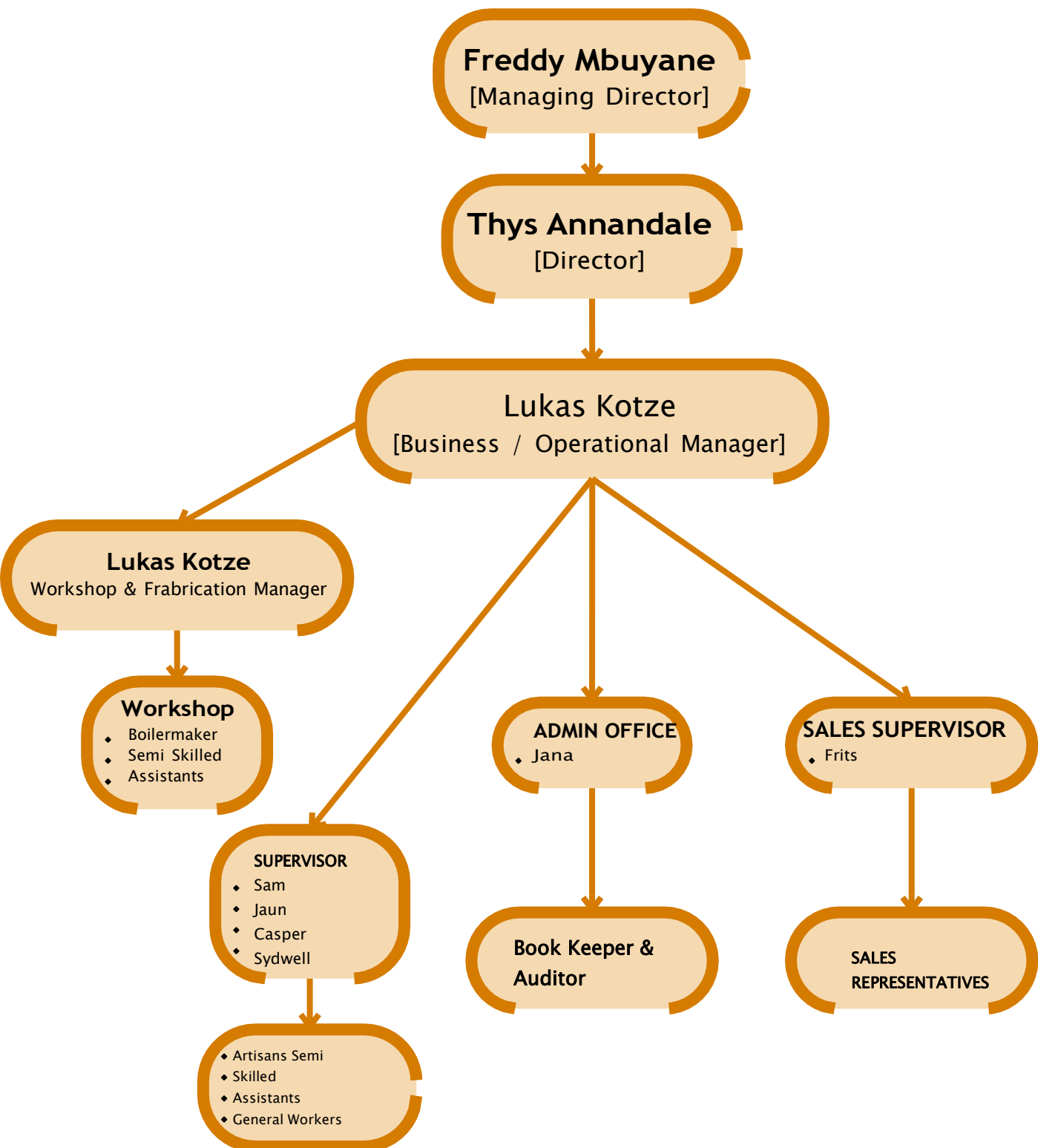
Endumeni Enterprises policy towards social responsibility is a commitment to perform a meaningful role to the South African society in its broadest context both directly and through our partners. Some of the social responsibility programs are described in the table below.

Organization	Details
Lewe In Liefde Middelburg	Donations to this home for the physically and mentally disabled.
Bet-El Sanctuary Mooinooi	Donations to this home for the physically and mentally disabled.
Nylstroom Children's home	Donations to children's home.

## BEE and SMME Procurement

The procurement strategy of Endumeni Enterprises is to promote the development of an entrepreneurial culture in South Africa to increase self-employment, employment opportunities and stimulate business growth.

# ORGANOGRAM



# HISTORY OF OUR BUSINESS

We service both small enterprises and major industrial clients across South Africa.

Endumeni Enterprises (Pty) Ltd was established in 2010, initially trading as Kanonkop Hardware & Mining Supplies. Over the years, the company has grown into a fully-fledged Mechanical Engineering and Industrial Services provider, delivering comprehensive solutions across mining, smelting, power generation, and heavy industrial sectors.

With a fully equipped workshop and an experienced team of artisans and specialists, Endumeni Enterprises provides:

- Mechanical design & implementation
- Fabrication & machining
- Installations & modifications
- Project management
- Maintenance services (surface & underground)

## Key Clients & Reputation

Endumeni Enterprises has built strong relationships with leading industrial companies, including:

- Glencore Alloys Rustenburg
- Glencore Wonderkop
- Glencore Boshhoek
- Glencore Lion
- Columbus Stainless
- Seriti Power
- Samancor Dikwena
- Samancor Tubatse
- Samancor Ferrometals

Our long-standing contracts and repeat work reflect our reliability and performance excellence.



# SCOPE OF WORK

---

1. Scaffolding services
2. SANS compliant lifeline installations
3. Specialized Roof solutions and maintenance (Working @ Heights specialists)
4. Replacement of Furnace parts including:
  - Pressure Rings, Bus-tubes, stacks. Expansion joints, Tundish complete with pipe installations.
5. Support service: Our professional support service includes:
  - On-site Support: In the event of on-site projects or any fault occurring in the field, nothing guarantees a faster response than having us on-site to investigate the problem. The goal is to get the equipment operational and usable to you in the shortest time possible with the least impact on your daily operations.
6. Conveyor Fabrications surface & underground, installations & modifications.
7. Pulley lagging & Conveyor belt splicing.
8. Pipelines: Installations & modifications.
9. Industrial handrails manufacturing and installation.
10. Roller shutter door maintenance and installation.
11. General welding and fabrication.

# WHY ENDUMENI ENTERPRISES

---

Whether you require mechanical engineering support, fabrication services, maintenance solutions or project-based assistance, our team is ready to assist. At Endumeni Enterprises, we value clear communication, fast response times and practical solutions tailored to your operational needs. Reach out to us to discuss your project requirements, request a quotation or schedule a consultation. We look forward to building a reliable partnership and delivering solutions you can depend on.

- Endumeni Enterprises has a pool of Artisans and a working at height team that are qualified and experienced in their field of work.
- Endumeni Enterprises has demonstrated its capability to implement cost-effective, customer driven solutions.
- Endumeni Enterprises offers after sales support to ensure customers' continuity of service.



# FABRICATION AND MACHINING



## PLATE WORK

- Chutes.
- Tanks.
- Bins.
- Hoppers.
- Grizzlies.
- Furnace components including water & air cooled.
- Conveyor Structures.
- Conveyor Pulleys with lagging.

## MACHINING COMPONENTS

- Shafts.
- Brackets.
- Housings.
- Sprockets.
- Sleeves.
- Structural Design and Installation.
- Shades.
- Gantries.
- Plant Equipment Structures, Workshops, Factory Structures.

## CIVIL WORKS

- Casting of foundations.
- Floors.
- Trenching of pipes & Cables.
- Casting of plinths.
- Formwork.

## CONVEYORS

- Structural design and Fabrications of Surface & Underground Conveyor systems.
- Complete installation from start to finish.
- Extensions of conveyors and Belt Splicing.
- Fabrication of Tip, Head, Tail sections including Tension car.
- Fabrication of Loading Bins, Transfer chutes.
- Fabrication of Pulleys.
- Pulley Lagging.

## LIFELINES (PERMANENT & TEMPORARY)

- Horizontal
- Vertical
- Anchor points
- Maintenance
- Certification

## SCAFFOLDING

- Erection & dismantling of access scaffolding
- Formwork
- Building assistance

## FURNACE & SINTERING FURNACE COMPONENTS

- Roof panels
- Tundish pipes
- Copper components
- Stack replacements & repairs

## OTHER

- 24/7 breakdown services
- Services across many sectors
- Available for all required work scopes



# WORKSHOP FACILITIES

## MACHINE SPEC & CAPACITY

Our workshop: Machine shop 24m x 20m

### Mac Afric Drill Press

- 5 speed – ZS4113A  
6 to 18 mm

### Hydraulic Press

- 12 Ton  
Stand-alone / side press

### Rexon 17 - 3/4" Drill Press

- RPM: 250  
6 to 25 mm  
9 speed

### Bench Grinders

- Type SA/6  
HP 1/4

### Forklift

- Hyster 5 Ton Diesel  
(Forklift / site ready)

### Rigger Store

- 1.5 to 12 Ton chain blocks
- Lever hoists
- Safety harnesses
- Block falls
- Rescue kits

### Other Equipment

- Overhead electrical crane

### Press brake

### Guillotines

### CNC Punching Machine

### Plate Roller

### CNC Machine - Model 1530 ZR CNC Machine

- Size Table: 1500mm X 3000mm
- Mild steel: Can cut up to 50mm
- Stainless steel: up to 25mm

### Fabricating Machinery

- 2 x CO.2 Welding Machines
- 2 x Arc Welding Machines
- 1 x Sand Blasting Machine
- 1 x Pipe Screw Machine
- 1 x Compressor



# PAST PROJECTS

START

MID

FINAL



# PAST PROJECTS

START

MID

FINAL

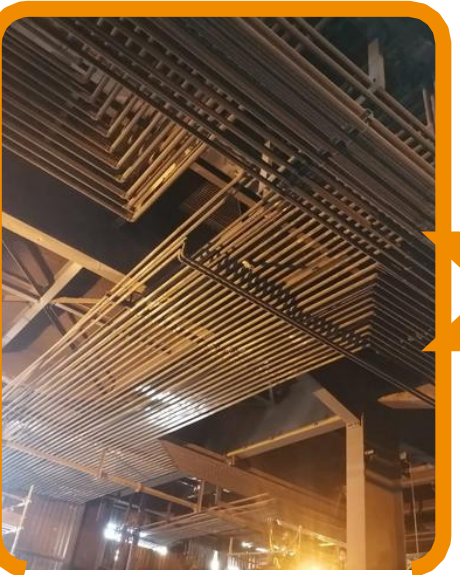
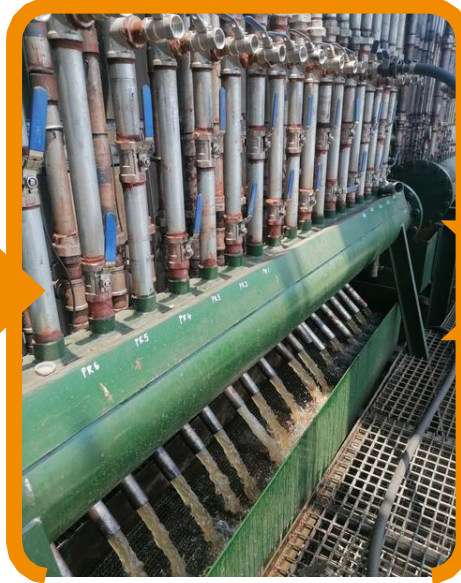


# PAST PROJECTS

START

MID

FINAL



# PAST PROJECTS

START

MID

FINAL

